



CRYSTAL FIRE

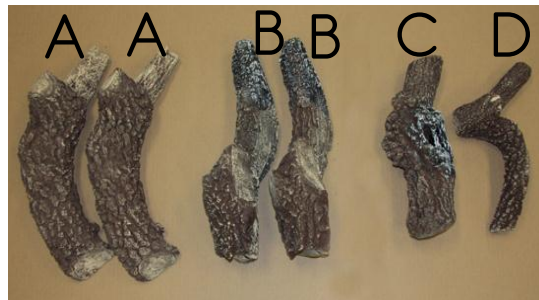
CF-20 Log Set Installation Guide

Thank you for purchasing a gas log set for your 20" Crystal Fire burner. These instructions will assist you in setup and placement of your new log set. While your gas logs can be arranged in a number of configurations, we've provided these instructions as a general guide for log placement.

Included in this kit:

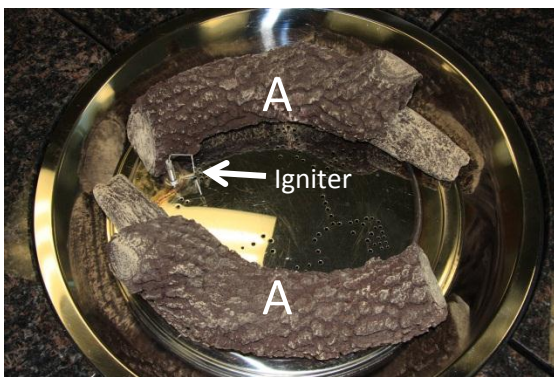
1 Bag of decorative volcanic stone

6 Refractory cement gas logs



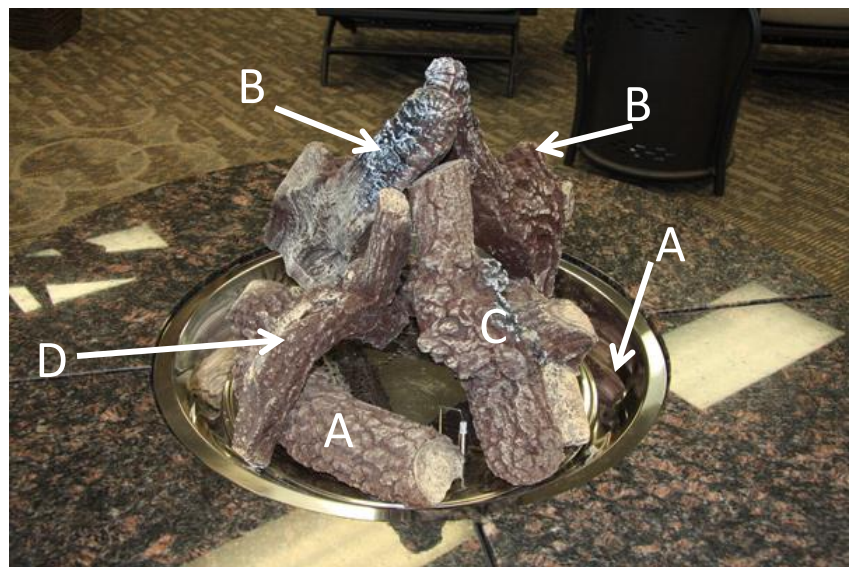
Step 1:

Remove logs from packaging and lay semi-circular logs "A" in base of burner as shown taking care not to block the burner ports directly in front of the igniter.



Step 2:

Lean log "B" against log "C" as shown, adding logs "D" and the second log "B" perpendicularly. Adjust placement to your liking.



Step 3:

Remove volcanic rock from packaging and evenly scatter around logs and in center of burner area, filling open spaces. Do not attempt to cover igniter. This may cause uneven sparking.

Note

Improperly ventilated log configurations may cause soot to appear on log surfaces. Rearranging logs to allow proper airflow should decrease sooting.