

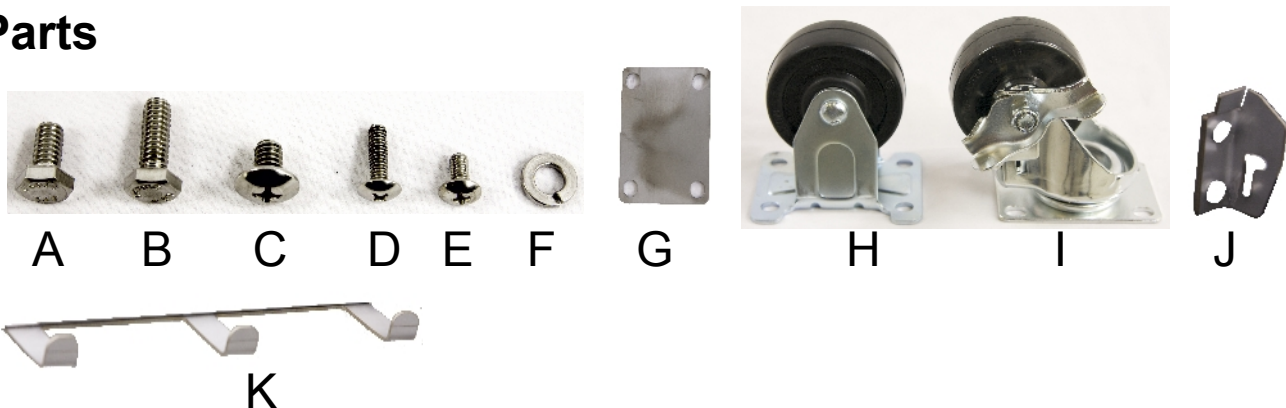
Assembling the 21" Angular Pedestal Base (SOL-AG-21C and SOL-AG-21CXL)

Thank you for your purchase of a Solaire Infrared Grill. By carefully following these assembly instructions and the operating instructions in the care and use manual, you will be assured of getting maximum performance and longevity from your Solaire Grill.

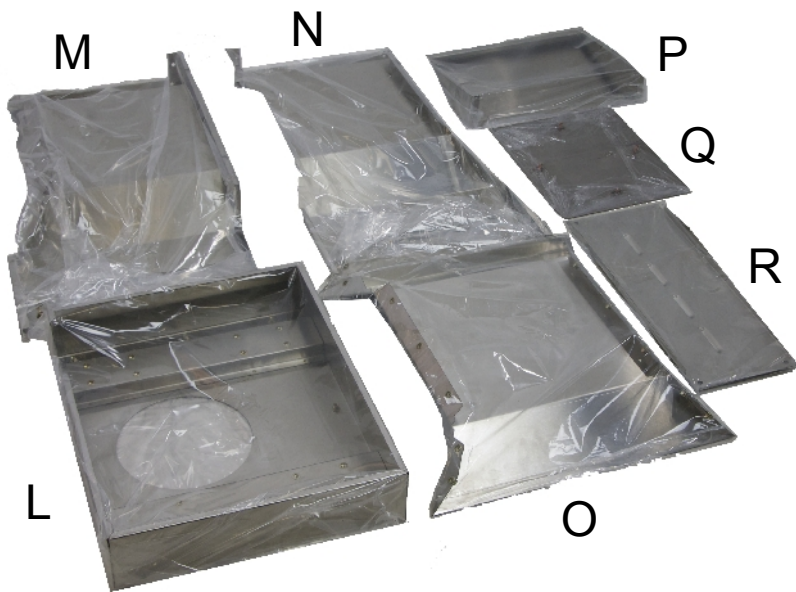
Tools Required: Philips Screwdriver; 7/16" End Wrench; 7/16" Socket and Ratchet Wrench; 8-inch or larger Adjustable Wrench; Teflon Tape or Pipe Thread Compound.

You should assemble your Solaire Grill on a firm, level surface. Work on the packing box or scrap carpet to protect the stainless steel from scratches. Two people are recommended, especially when assembling the Panels to the Base and in placing the Grill onto the Pedestal.

Parts



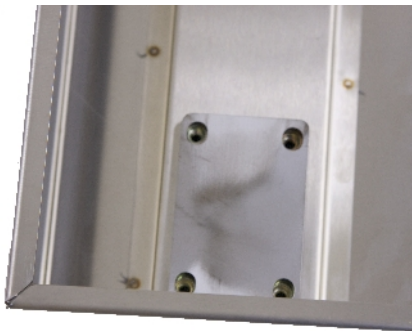
- A** – 1/4-20 x 1/2" Hex Bolt (31 each) (8 for side shelf brackets; 23 for attached side panels to front panel, and panels to base)
- B** – 1/4-20 x 3/4" Hex Bolt (16 each – for casters)
- C** – 1/4-20 x 1/2" Screw (4 each – for back panel)
- D** – 8-32 x 5/8" (6 each) (4 to secure grill to Pedestal; 2 to secure control panel area to Pedestal).
- E** – 8-32 x 1/2" (4 each – to secure tool holders to side shelves)
- F** – 1/4" Split Lock Washers (47 each – use with each 1/4-20 Hex Bolt)
- G** – Spacer Plate (4 each). For Front Fixed Casters (two per caster)
- H** – Fixed Caster (2 each – use with two Spacer plates per Caster).
- I** – Swivel Caster with Brake (2 each – DO NOT USE with Spacer Plate)
- J** – Side Shelf Bracket (4 each) (2 – Front; 2 rear)
- K** – Tool Holder (2 each)



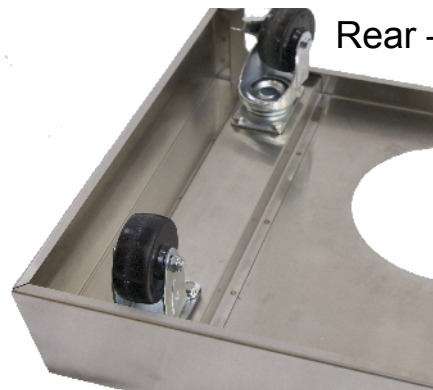
- L - Base
- M – Right Side Panel
- N – Left Side Panel
- O – Front Panel
- P – Side Shelf (2 each)
- Q – Tank Hole Cover
- R – Back Panel

Step 1 – Install Casters

Identify that the rear of the base is open, the front of the base is closed. Using 1/4-20 x 3/4" Bolts and 1/4" Split Lock Washer, install the two fixed casters in the front positions, first placing two (2) Spacer Plates beneath each Fixed Caster. Install the two Swivel Casters with Brake at the rear of the Base. Tighten with wrench or socket.



Two Spacer Plates are placed beneath each Fixed Caster.



Rear – Swivel Casters

Front – Fixed Caster



Completed Base

Step 2 – Install Front and Side Panels

Sequencing Note: Finger tighten bolts until all bolts are installed. Then, wrench tighten the side panels to the front panel before tightening the bolts holding the panels to the base.

Use 1/4-20 x 1/2" Bolts and 1/4" Split Lock Washers.

Install the Front Panel to the Base. Install Left Side Panel to Base and Front Panel, then install Right Side Panel to Base and Front Panel. Wrench tighten Side Panels to Front Panel.

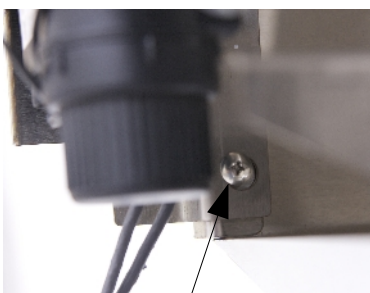
Align rear face of Side panels to be flush with rear face of Base, then wrench tighten all bolts to secure the Panels to the Base.



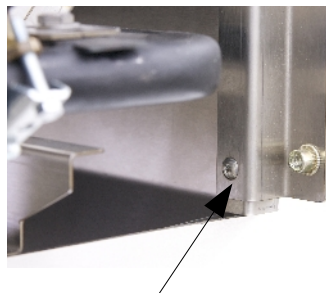
Step 3 – Install Grill Onto Pedestal

With the help of another person, carefully set the grill onto the finished Pedestal. Fasten with four 8-32 x 5/8" Screws, two per side.

Two other 8-32 x 5/8" Screws are used to secure the grill structure behind the Control Panel to the Pedestal. Remove the Control Panel to gain access.



Left Side



Right Side

Remove these screws (on both sides) to remove Control Panel. First remove Knobs, then the four screws holding the Control Panel. Please take care with control panel, as it will be attached to with two wires from the Push Button Igniter Switch to the Igniter Module.

Step 3 (continued) – Install Grill Onto Pedestal

After securing the Grill to the Pedestal, reinstall the Control Panel and Knobs.

Step 4 – Install Regulator to Manifold

Attach the Regulator (supplied with the Grill) to the threaded manifold of the grill (accessible from rear of grill). Be sure to use pipe thread compound or teflon tape on the threads. Carefully tighten with Adjustable Wrench. Make sure regulator is set for proper gas type (refer to Care/Use Manual).

Step 5 – Connect to Gas Supply

Perform the gas supply hookup according to instructions in the Care/Use Manual.

Step 6 – Install Rear Panel to Pedestal

Attach the Rear Panel to the Pedestal with four 1/4-20 x 1/2" Screws.

Step 7 – Install Tank Cover Plate

If using Natural Gas, place Tank Cover Plate over Bottle Hole in Base.

Step 8 – Install Tool Holders

Using two 8-32 x 1/2" screws, install tool holder onto one Side Shelf. Repeat for the other.

Step 9 – Install Side Shelves

Using 1/4-20 x 1/2" bolts, install side shelf brackets to sides of Pedestal. Please note that the pins of the Side Shelves must be in the Bracket Slots while assembling the Brackets.

Step 10 – Enjoy Your Grill!

Please read the Care/Use Manual and Great Grilling Simplified. Happy Grilling!

