

Wayland

Installation & User Guide
Installer please leave this with homeowner



Outdoor Kitchen

Assembly & Installation

Thank You!

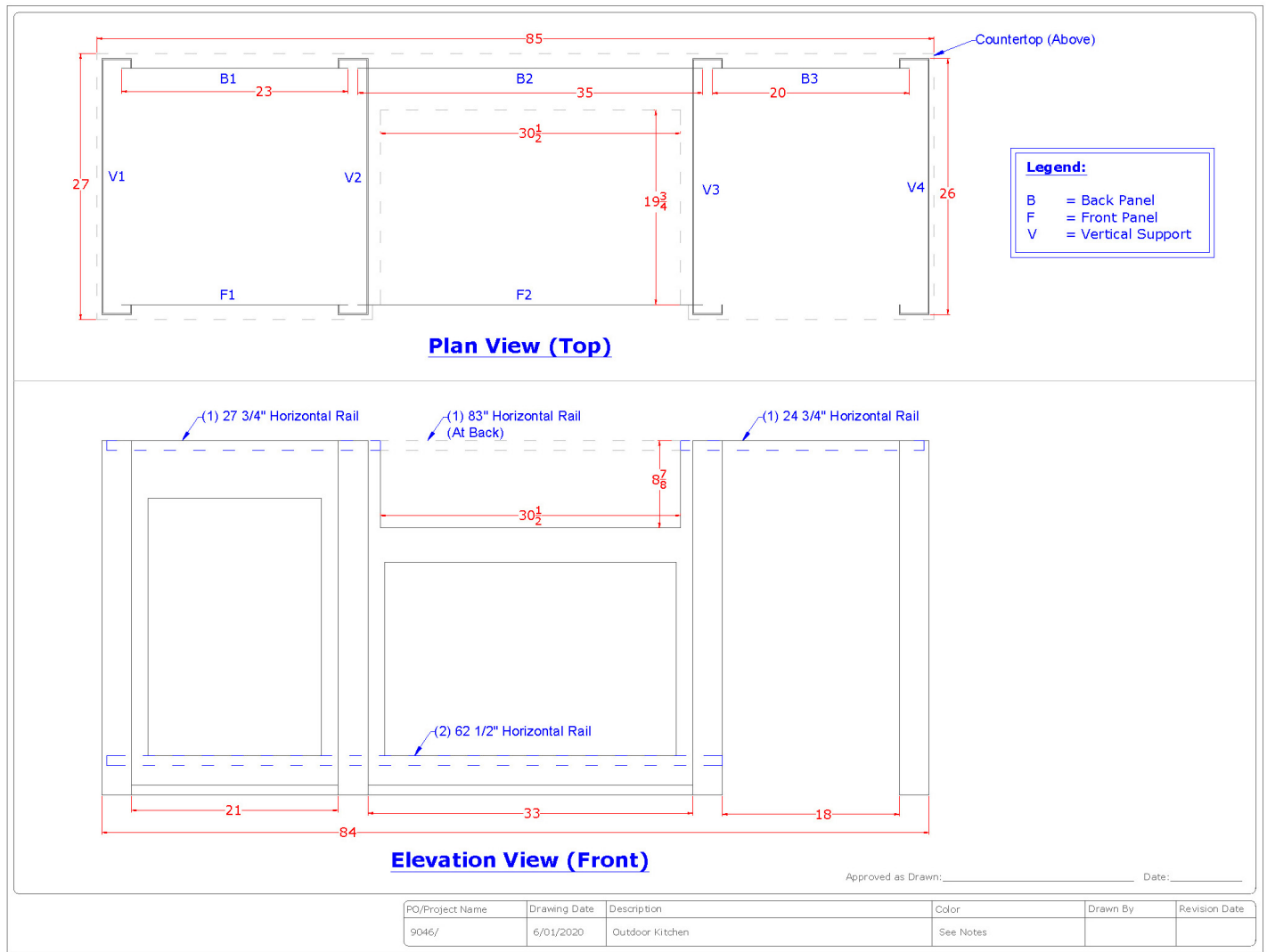
Thank you for purchasing a Wayland Outdoor Kitchen! We are confident this quality product will last you for years to come. If you need further help or additional information regarding installation, please reach out to your local dealer for assistance.

Please watch our video installation guide prior to reading this guide! This will help visualize the installation process.

(See back page for details.)

Understanding the CAD drawing

Each Outdoor Kitchen will be accompanied by a kitchen specific shop drawing. This drawing will identify the name assigned to each support or panel as well as establish their location in the system. Panels and supports will have an adhesive label attached to the main body of the part that corresponds to the name assigned to each piece. Consult the drawing and the attached labels to ensure that supports and panels are assembled in their assigned locations.



Shell Construction

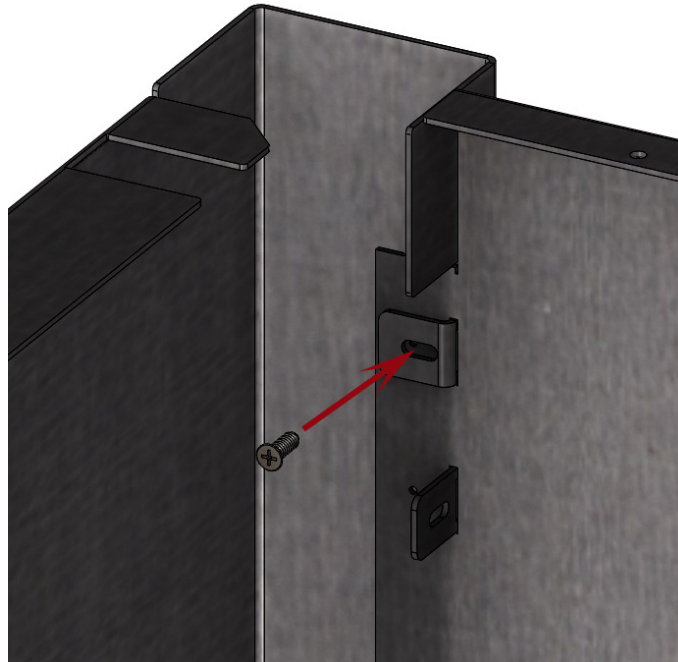
Construction of the shell includes erection of the vertical supports and the front and back panels. There is not a required starting location for erection. Typically, shell construction will start with one side of the kitchen, but the erector should determine the best starting location based on any site-specific requirements.

The primary fastening mechanism is a slot and tab system that is laser cut in the supports and panels. The front and back panels will have slots cut in them that correspond with tabs that are cut in the vertical supports. While not a requirement, it is recommended that the erector start with two vertical supports and the back panel that fits between them. Tabs should be fully inserted into the corresponding slots.

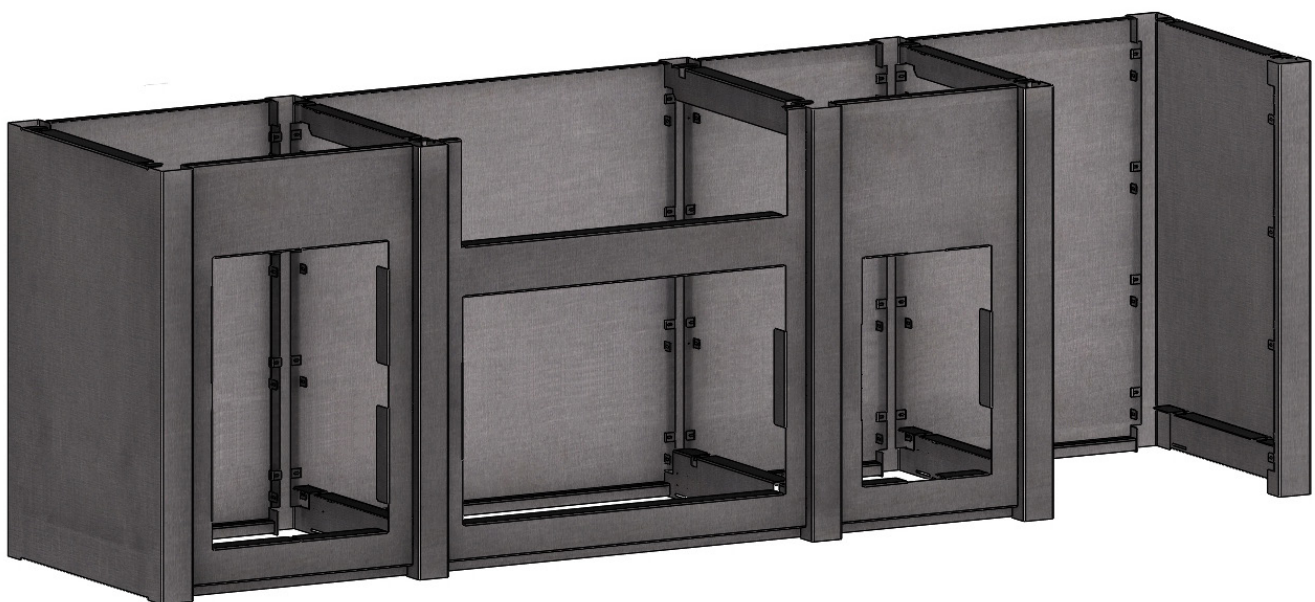


Note: Tabs have been laser cut in pairs. Repeated bending of the metal tabs will result in the tab breaking off. For this reason, only one tab out of each pair of tabs should be used. This will allow for any future addition or change to the kitchen as well as disassembly for the purpose of relocation.

Tabs will be bent so that they are parallel to the front/back panel. Tab should be bent towards the vertical support and away from the center of the front/back panel. Only bend (1) tab per pair of tabs. The bent tabs of the vertical supports should be fastened to the front/back panels with one of the provided self-tapping screws.

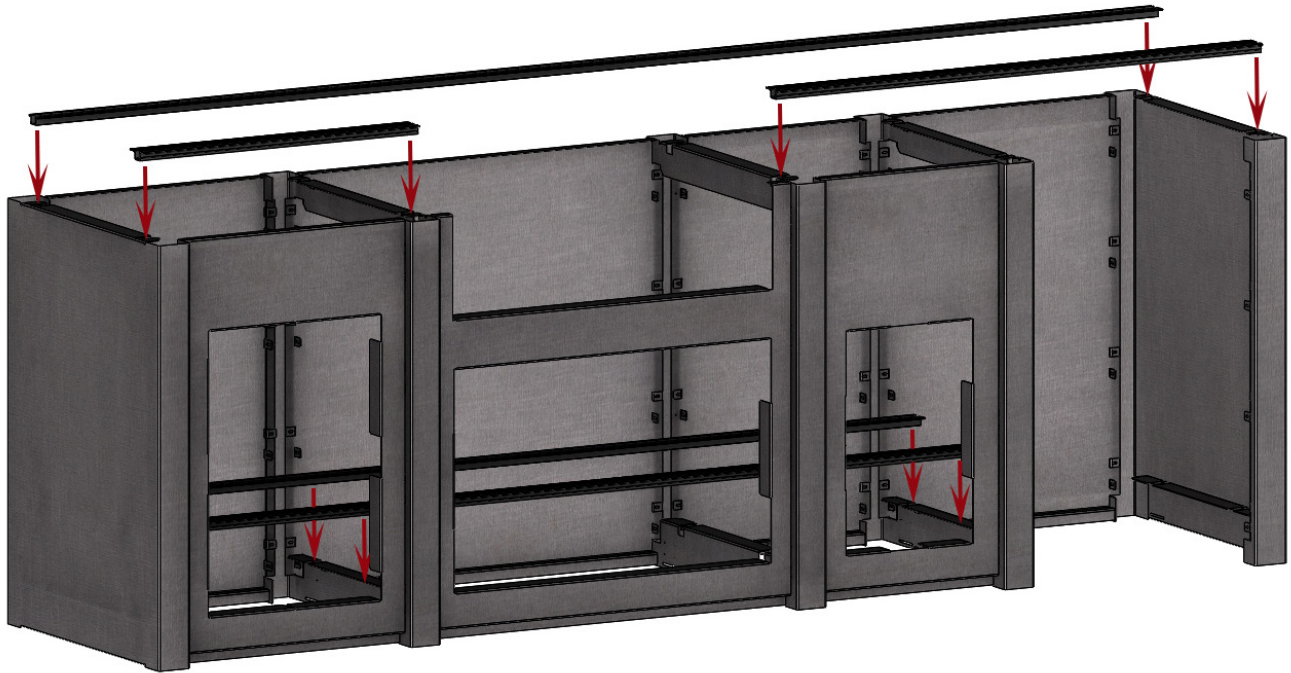


This process should be repeated until all vertical supports and front and back panels have been erected. While the order of construction can vary, it is recommended that all back panels be erected before installing the front panels.

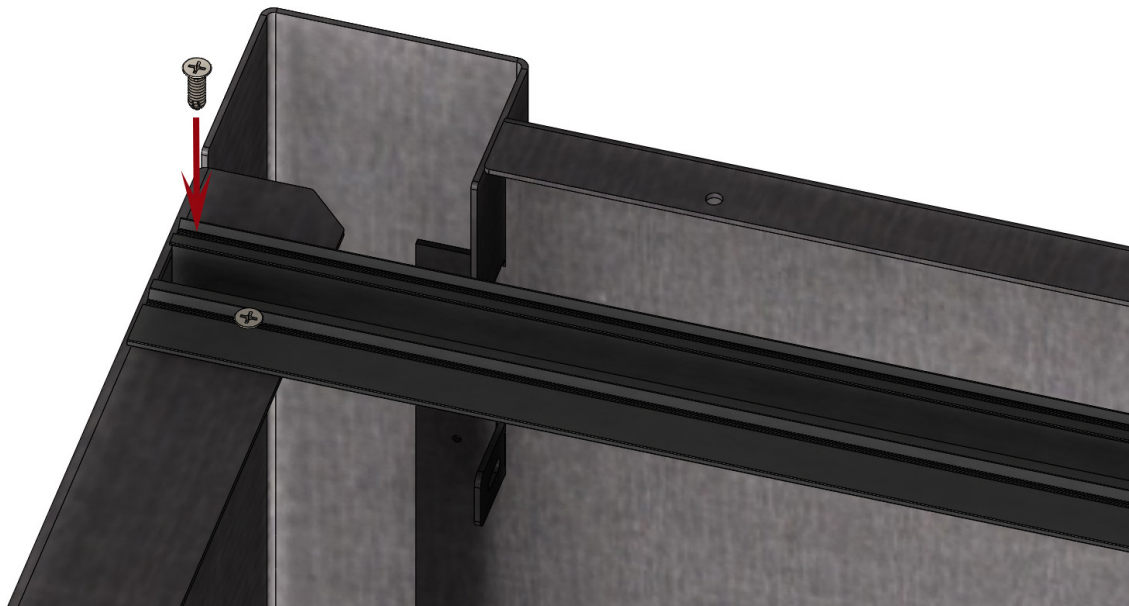


Horizontal Rail Installation

At the top and bottom of each vertical support there are 1" wide slots cut for the horizontal rails. The rails will typically extend the full length of the outdoor kitchen. At some locations they will not be continuous to ensure that they do not conflict with the installation of the kitchen components. Horizontal rails will be pre-cut to length. Refer to the shop drawings for the rail lengths and locations. Where the horizontal rail intersects with a vertical support, install (2) self-tapping screws in the grooves on top of the horizontal rail.

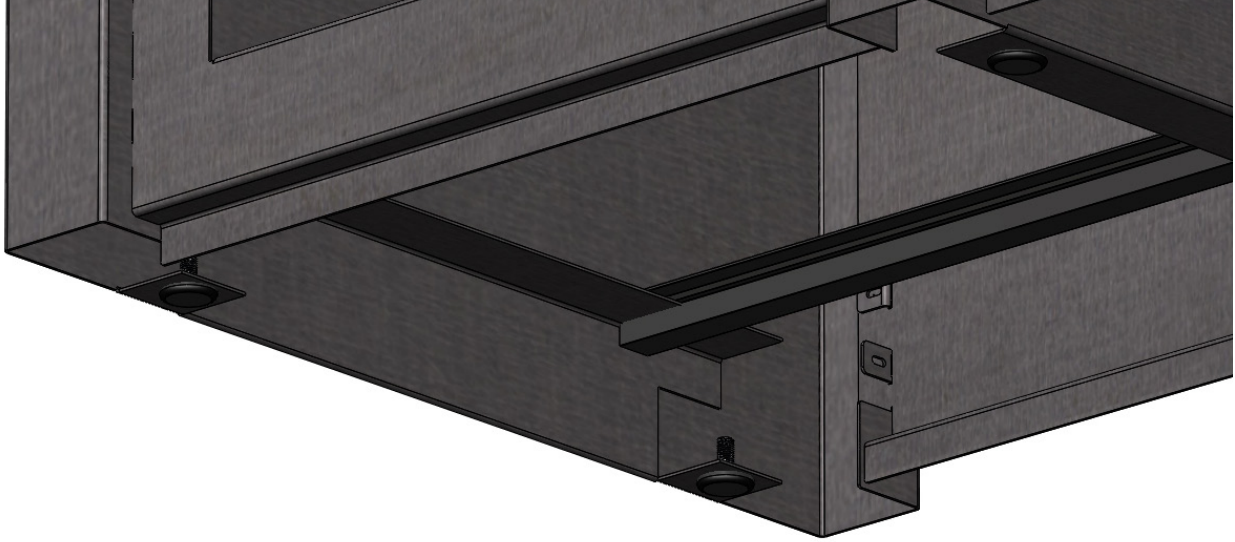


Where the horizontal rail intersects with a vertical support, install two (2) of the included self-tapping screws in the grooves on top of the horizontal rail.



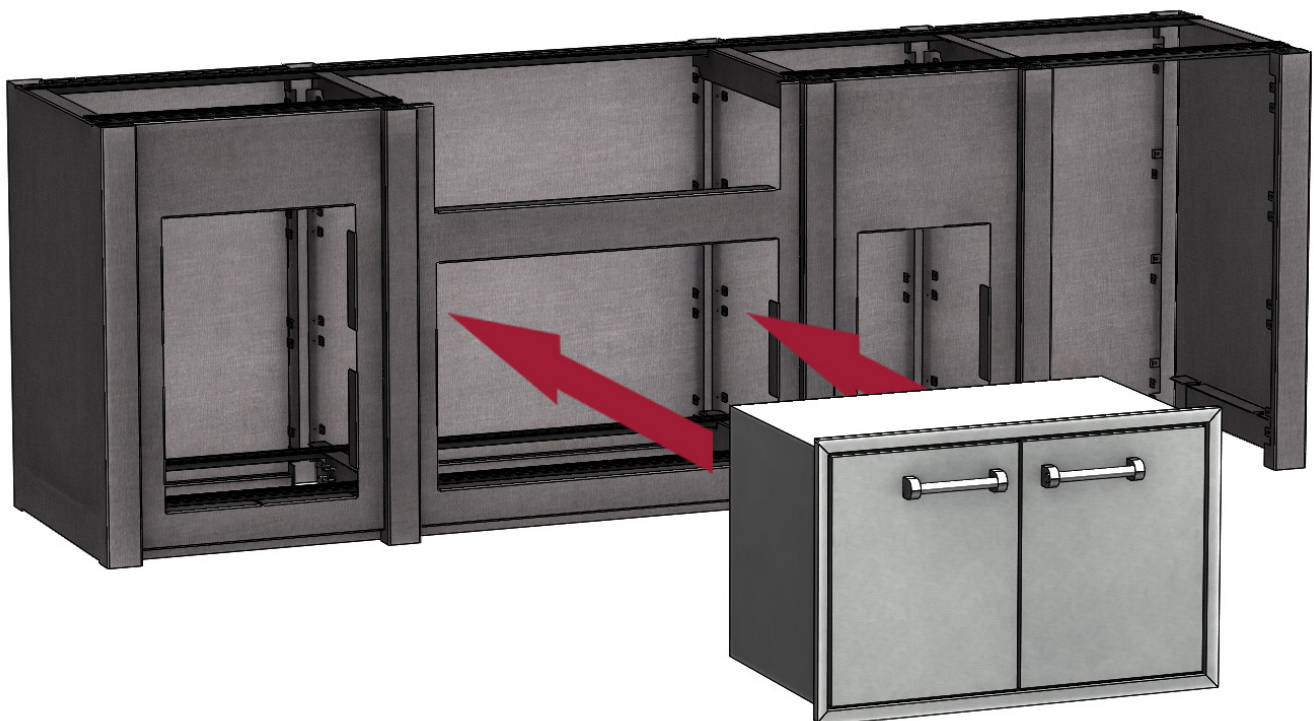
Leveling System

Each unit will include an adjustable leveling kit. Using the leveling feet will be at the discretion of the installer. Wayland Industries does not require that the feet be used to elevate the entire product. If leveling is required, install the leveling bolts through the pre-tapped holes in the Vertical Supports where needed. Then adjust as required to achieve level.



Component Installation

Due to the wide variance in component types and fastening mechanisms, specific instructions will not be available. Typically, the metal front panel of the kitchen shell will have formed returns at the opening for the component to be fastened to.



Countertop Installation

The counter top will have a pre-installed cementitious board on the underside of the metal top. Place a construction adhesive in the grooves on the top of the horizontal rail prior to installation of the metal top. Using an adhesive will ensure the top does not shift or slide. The counter top should cover the top of the kitchen shell and rest on top of the horizontal rails.



Completion

Install any remaining components, and enjoy!



Operation & Maintenance

- Excessive heat can cause damage to the finish. A very hot wood or gas fire, or hot coals and embers coming in contact with a finished surface can cause discoloration or more serious damage. This type of damage, caused by overheating, is considered abuse and is not covered under warranty.
- Your kitchen and countertop powdercoat finishes can be cleaned using a damp cloth and soap or mild household cleaner, or rubbing alcohol for tougher stains. For Stainless finishes, please use standard Stainless cleaners and supplies. To avoid damage to the finish, abrasive cleaning products and cleaners containing ammonia or other harsh chemicals should be avoided.

Warranty

Your Wayland Products are covered by a 3 year limited warranty. For more information, please visit www.stollindustries.com/resources/. All warranty claims must be placed through your local dealer.



WARNING

This product can expose you to chemicals including Carbon Black, which is known to the state of California to cause Cancer. For more information go to www.P65Warnings.ca.gov