

PLATINUM SMART-HEAT™ ELECTRIC



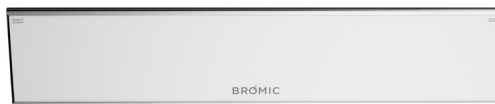
KEY FEATURES

- ▶ **Flexible Mounting** including wall, ceiling and recessed options with minimal clearance requirements
- ▶ **Compact & Elegant Design** for seamless integration into design-focused spaces
- ▶ **Durable Construction** with a 304 stainless steel body and tinted ceramic-glass face
- ▶ **Customized Heat Output** in increments from 0–100% using the new Affinity Collection of controls
- ▶ **Marine Grade Available** built with 316-grade stainless steel to counteract corrosive coastal environments

COLOR OPTIONS



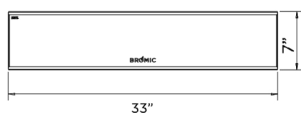
Black



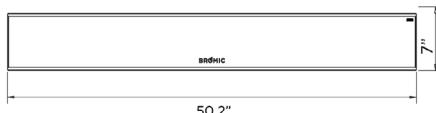
White

DIMENSIONS

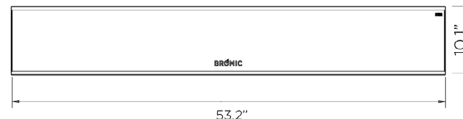
2300W



3400W



4500W



MOUNTING OPTIONS



Wall Mounted



Ceiling Mounted



Standard Recessed Kit



Low Clearance Recess Kit

Discover more about Platinum Smart-Heat™ Electric

Learn more at bromic.com

BROMIC
HEATING

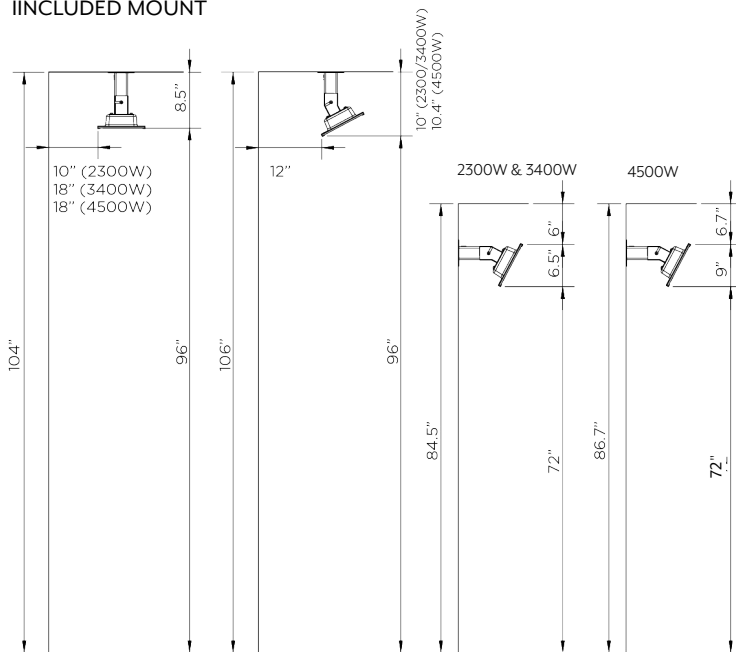
SPECIFICATIONS

PRODUCT NUMBER BLACK WHITE	WATTAGE	HEAT AREA	WEIGHT	RATED CURRENT	MINIMUM FLOOR CLEARANCE	APPROVAL CERTIFICATION	IP RATING	CONTROL OPTIONS
BH0320019 BH0320020 BH0320003 BH0320007	2300W	65ft ²	16.5lbs.	208/11.1A 220-240V/9.6A	WALL 72" CEILING 96"	INTERTEK ETL / cETL 5001799	IP54	Affinity On/Off Affinity Dimmer Manual Wall Switch
BH0320021 BH0320022 BH0320005 BH0320008	3400W	108ft ²	22lbs.	208V/16.3A 220-240V/14.2A				
BH3622004 BH3622005 BH3622000 BH3622001	4500W	143ft ²	33lbs.	208V/21.6A 220-240V/18.8A				

MARINE PRODUCT NUMBER BLACK WHITE								
BH0320023 BH0320024 BH0320015 BH0320017	2300W	65ft ²	16.5lbs.	208/11.1A 220-240V/9.6A	WALL 72" CEILING 96"	INTERTEK ETL / cETL 5001799	IP54	Affinity On/Off Affinity Dimmer Manual Wall Switch
BH0320025 BH0320026 BH0320016 BH0320018	3400W	108ft ²	22lbs.	208V/16.3A 220-240V/14.2A				
BH3622006 BH3622007 BH3622002 BH3622003	4500W	143ft ²	33lbs.	208V/21.6A 220-240V/18.8A				

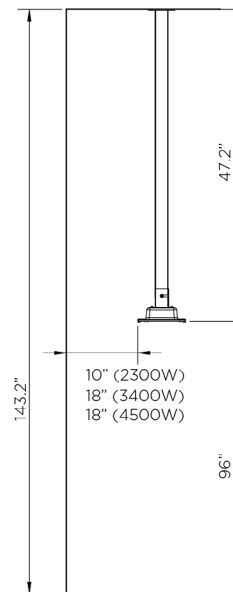
CLEARANCES

INCLUDED MOUNT

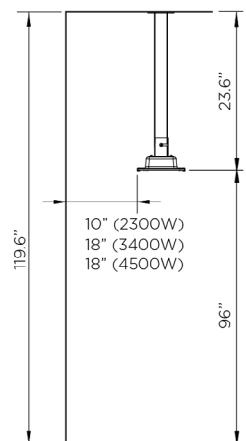


MOUNTING ACCESSORIES

OPTION 1 4' SUSPENSION POLE



OPTION 2 2' SUSPENSION POLE



RECESSED

STANDARD RECESS KIT

Refer to Installation Manual. 10" height above heater required. If you don't have 10", use the Low Clearance Recess Kit.

LOW CLEARANCE RECESS KIT

