

# FIRE & ICE ACCESSORIES

Variations in color and shade are inherent in all printing processes, the actual colors may vary slightly from those shown in this brochure. Please visit your local dealer to view a sample.

## BI-DEEP SURROUND

Comes with the BI-DEEP Series models ONLY. Fireplace can be installed with or without the surround.

BI-50-DEEP - 49 1/4" x 15 3/4"

BI-72-DEEP - 72 3/4" x 15 3/4"



**NEW!**

## FIRE GLASS MEDIA

Large glass nuggets and white and blue diamond fire glass media are included with the Fire & Ice Series ONLY.

(available for other models to purchase for an additional charge).



**NEW!**

## 6-PIECE LOG SET

The 6-piece log set comes with the Fire & Ice Series and WM-BI-2428-VLR models ONLY.

(available for other models to purchase for an additional charge).



## REMOTE



## DESIGN SPECIALTIES

Design Specialties steel overlays are available for the ZECL-39-4134-WHTGLS, INSERT-30-4026-WHTGLS, WM-BI-48-5823-WHTGLS, BI-50-DEEP and BI-72-DEEP (available for an additional charge.)

*Blacksmith overlay shown on a INS-30-4026-WHTGLS*



# LIGHTING

## Colorful Flames

Blue, Golden Yellow and Purple Fire & Ice flame: WM-BI-26-3623-WHTGLS, WM-BI-34-4423-WHTGLS, WM-BI-48-5823-WHTGLS, WM-BI-72-8123-WHTGLS, ZC-30-3224-WHTGLS, INSERT-30-4026-WHTGLS, BI-50-FLUSH-WHTGLS, BI-50-DEEP-WHTGLS and BI-72-DEEP-WHTGLS models only



Three flame colors to choose from, changeable by remote



## Surround Back Lighting

WM-BI-26-3623, WM-BI-34-4423, WM-BI-48-5823 and WM-BI-72-8123 models only



WMBI-48-5823 Electric Fireplace with Blacksmith Classic Bronze overlay and Sun Tea fire glass

## WMBI-48-5823 SPECIFICATIONS

### WM-BI SERIES

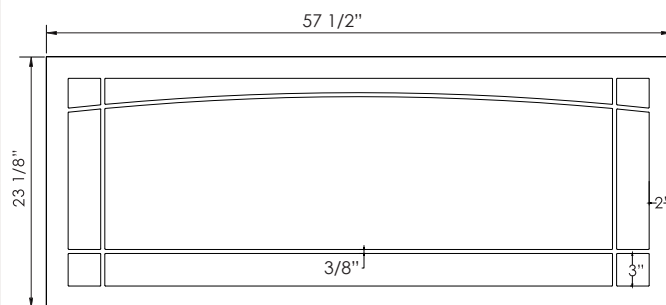
#### Fireplace Features

- Can be wall mounted or built in
- Clean black glass surround
- **NEW** Hardwire ready
- Control brightness of front and rear flames
- Latest LED light technology
- **NEW** LED ember lights in log set
- 13 colors of surround back lighting on 3 sides
- Heater and fan
- Heat is vented out the bottom
- No grills
- Temperature maintenance control
- Maintains a constant temp of 25° C / 87° F
- Approx. heating area 400 - 500 sq. ft.
- Remote control included for flame and heater & surround back lighting
- Three colors of fire glass media and LED ember log set in the box (page 22)
- Plug on left side



Volts	120
Amps	12.5
Watts	1500 max
Heater On	1500 watts high, 750 watts low
Heater Off	22 watts
Lamps	LED 22 watts
Rotor Motor	1 at 5 watts
Height, Width, Depth	21 1/4 x 48 x 6
Glass Viewing Opening	45 1/2 x 10
Surround Size	57 1/2 x 23
D.S. Surround Size	57 1/2 x 23 1/8
Shipping Size	
Fireplace Unit	60 3/4 x 10 1/4 x 26 1/4
D.S. Surround	60 x 26 x 5
Shipping Weight	
Fireplace Unit	82.2 lbs. Glass Included
D.S. Surround	35 lbs.

WMBI-48-5823 with log set and Mission Cast Iron overlay shown to left.



Mission Line Drawing for steel overlay fitting on WM-BI-48-5823 and WM-BI-48-5823-WHTGLS electric fireplaces

# DESIGN SPECIALTIES

## STEEL FINISHES

### POWDER COAT

## STANDARD FINISHES



Ancient Age



Brite Black



Bronze Burst



Cast Bronze



Cast Iron



Classic Bronze



Copper Vein



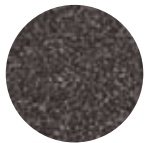
Dark Pewter



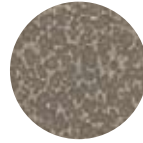
Espresso



Gator Black



Granite



Graphite



Mahogany



Natural Iron



Rust



Rustic Black



Silver



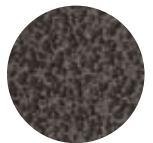
Solar Bronze



Textured Black



Toffee



Vintage Iron

Proudly made in the USA, each Design Specialties door is hand crafted to the specifications of each order. Due to the nature of the anodizing, plating and powder coat processes, slight variations in color may occur. In particular, finishes including, but not limited to, Forged Iron, Sierra Copper, Rustic Copper, Black Silver Edge and Black Copper Edge.

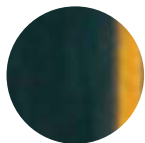
## ARTISAN FINISHES



Autumn Glow



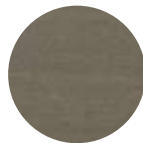
Aztec Gold



Copper Edge



Copper Fire



Forged Iron



Metro Steel



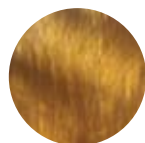
Old World Bronze



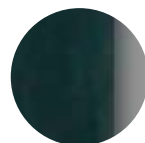
Rustic Copper



Shark Skin



Sierra Copper



Silver Edge



Venetian Bronze



Vintage Brass

*Variations in color and shade are inherent in all printing processes, the actual colors may vary slightly from those shown in this brochure. Please visit your local dealer to view a sample.*

## TWO-TONE FINISH OPTION

Amantii offers a Two-Tone finish option:  
Sierra Copper Frame with Metro Steel Accents.

Available for the ZECL-39-4134, ZECL-39-4134-WHGLS, INSERT-30-4026,  
INSERT-30-4026-WHTGLS, WMBI-48-5823 and WM-BI-48-5823-WHTGLS

The Two-Tone finish comes in Blacksmith style face only.



Shown on the INS-30-4026-TWO-TONE