



FLAMECRAFT

# Tondo Fire Pit Manual



## **Tondo Fire Pit Manual**



## IMPORTANT

This document contains essential information for the safe installation and operation of this fire product. Instructions are modified or updated as needed. It is the installer's responsibility to periodically review the current version of instructions for applicable updates. The instructions must be strictly followed to qualify for product warranty. Warranty will be void if not followed.

## Installation

### **WARRANTY REQUIREMENT:**

Warranty is void if product is altered.

**WARNING:** For outdoor use only.

**WARNING:** This product must be installed by a licensed gas professional that is locally licensed by the authority having jurisdiction in gas piping. We highly recommend a professional certified in the U.S. by the National Fireplace Institute (NFI). The installer must follow all instructions carefully to ensure proper performance and safety

**WARNING:** Confirm this appliance is built for the gas-type being used – Natural Gas or Liquid Propane. Do not use Natural Gas configured appliances with Propane. Do not use Propane configured appliances with Natural Gas.

**WARNING:** To prevent damage or serious injury, ensure all connections are leak tested prior to operation and use.

**WARNING:** Fuel line sizing is the responsibility of the installer and must be able to supply the stated maximum BTU output for the product.

**WARNING:** Gas Plumbing Connections: The installer should only use joint compound or tape that is resistant to all gases. Apply joint compound to all male pipe fittings only. Do not use joint compound on flared or tapered fittings.

Be sure to tighten every joint securely.

**WARNING:** For systems with an extended or detached valve box, the area in which the valve box is installed must conform with all installation requirements, including but not limited to location, construction, venting and local codes. Failure to do so may result in personal injury, property damage, or explosion.

## Operation / Use

**WARNING:** It is highly recommended that the fire pit remains covered when not in use.

**WARNING:** Before use, test all gas connections for leaks. Do not use the fire pit if there is any evidence of leaking gas. If leaking gas is suspected, turn off the main gas supply and call a licensed gas professional.

**WARNING:** Do not use the fire pit if the burner or media have been submerged under water. Immediately call a qualified technician to inspect the fire pit.

**WARNING:** Never use any material that is non-porous and holds moisture, such as gravel, pebbles, etc. This material is not sufficiently porous to allow heated steam to readily escape. When heated, any moisture inside this material will boil and fracture unexpectedly, which can cause personal injury or damage.

**WARNING:** Solid fuels cannot be burned in the fire pit. Real wood logs, leaves, sticks, paper, clothing, food, and plastic should be kept away from the fire pit. Do not use the fire pit for cooking. Make sure there is no vegetation or other objects over the top or sides of the fire pit that could interfere with safe operation.

**WARNING:** If fire media is wet, allow the fire pit to burn until media is dry while remaining a safe distance away (at least 20 feet from the fire pit).

## Maintenance / Service

**WARNING:** Any component removed for servicing must be replaced prior to operating the fire pit.

**WARNING:** Installation, service, and repair should be done by a licensed gas professional or NFI certified gas specialist. The fire pit should be inspected prior to use and at least annually.

**WARNING:** Ensure gas and power (if applicable) are shut off and fire pit is cool before servicing

**WARNING:** Keep any debris out of the burner and fire pit and keep air mixer clear.

**WARNING:** Periodical inspection by a qualified service technician of the air-intake is required to ensure proper performance.

**WARNING:** If there is any evidence of damage, the burner must be replaced as specified by the manufacturer.



### IMPORTANT

Please consult with your burner manual.

**WARNING:** Refer to the burner manual for gas conversion requirements. Any gas conversion must be done by a licensed gas professional and in strict accordance with the burner manual.

**WARNING:** Refer to the burner manual for clearances to combustibles.

**WARNING:** Refer to the burner manual for yearly maintenance protocol.



### PROP 65 WARNING

**WARNING:**

This product can expose you to chemicals, including Carbon Monoxide and Benzene, which are known to the State of California to cause cancer, birth defects, or reproductive harm. For more information, visit [www.P65Warnings.ca.gov](http://www.P65Warnings.ca.gov).



### IMPORTANT

Please carefully read and follow the instructions in this manual to prevent personal injury, property loss, or death.

## Contents

Required Tools . . . . .	3
Included with Your Fire Pit . . . . .	4
Accessories . . . . .	4
Unpacking . . . . .	5
Base Placement . . . . .	5
Leveling the Fire Pit . . . . .	5
Securing Top & Bottom of Fire Pit . . . . .	5
Ignition System Installation . . . . .	6
Gas Connections . . . . .	6
Fire Media Installation . . . . .	8
Operating Instructions . . . . .	9
Warranty Information . . . . .	11
Routine Cleaning, Maintenance & Repair . . . . .	13

---

## Required Tools

**Before you start assembling your fire pit, make sure you have the following:**



**2 Open-Ended Wrenches**  
to secure gas connections



**A Utility Knife**  
to remove packaging

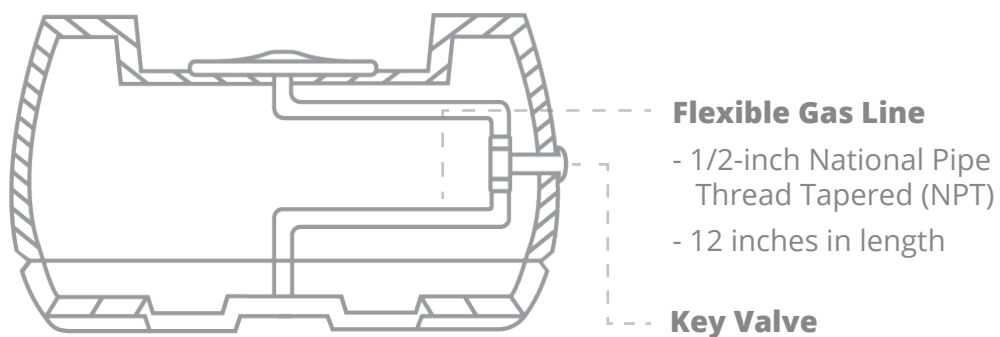
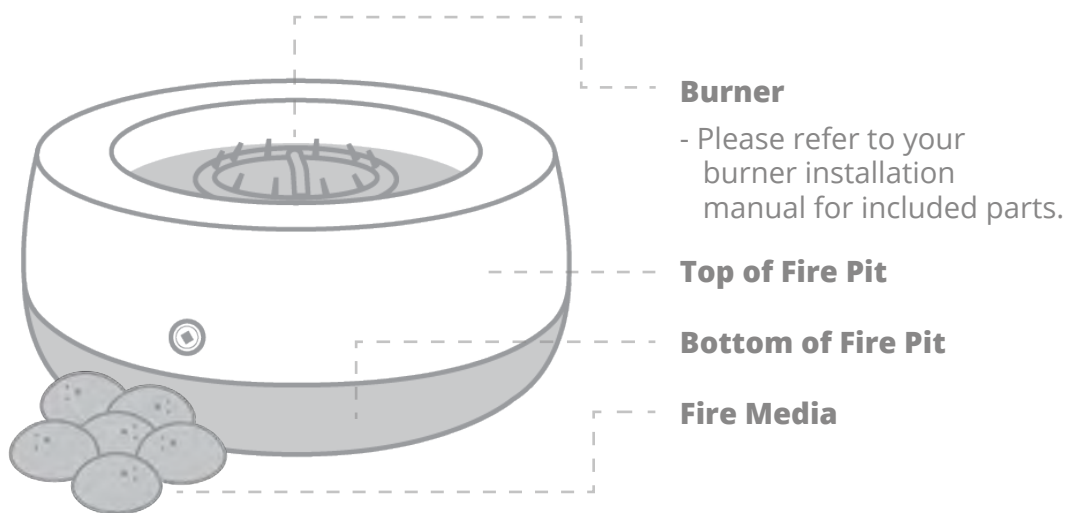


**Sturdy Gloves**  
for protection during  
installation and media placement



**A Buddy**  
to help carry the Tondo to the location  
of installation and to safely secure the  
top of the fire pit to the bottom

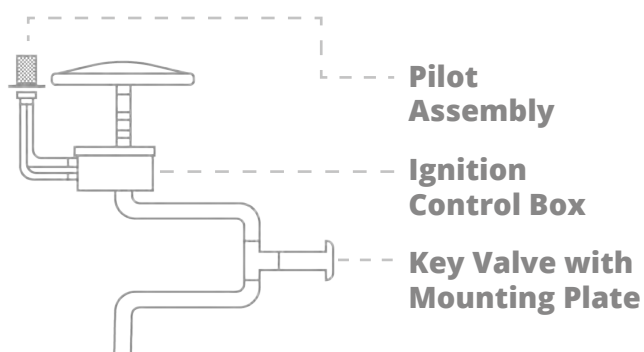
## Included with Your Fire Pit



Tondo Side View (cut in half)

---

## Included With Electronic Ignition Models Only





## Unpacking

- Do not discard any packaging until assembly is complete and your fire pit has been tested.
- Keep your Tondo Fire Pit installation manual and your burner installation manual in a safe place for future reference.

## Base Placement

**Please consult your burner manual for clearance requirements before choosing the location of your fire pit.**

- With the help of a buddy, place the base in your desired final location.
- Make sure the base is placed on a clean, hard, flat, non-combustible surface. Avoid areas that collect water.

### **If Your Base Includes Leveling Feet:**

- Using your hand or a 7/8" socket wrench, screw each foot down toward the ground.
- Once each foot is securely tightened against the ground, set a leveling tool on top of the base to double-check that it's evenly balanced.
- Proceed to securely attaching the top of the fire pit to the base.



**Scan to see how to set up your Tondo**



**Scan to see how to level your Tondo**

## Securing the Top & Bottom of the Fire Pit



Place the top half directly over the bottom, and connect the two notches together.

When aligned correctly, the top (male) will interlock with the bottom (female).

# Ignition System Installation

All fire pits, match-lit kits, safety pilot, and electronic ignition systems are designed and intended for outdoor use only.

## Match-Lit Ignition:

- i. The fire pit comes with a standard match-lit ignition.
- ii. **Make sure there is a gas shutoff located on the exterior of your fire pit to allow for emergency shut-off and maintenance.**

## Electronic Ignition:

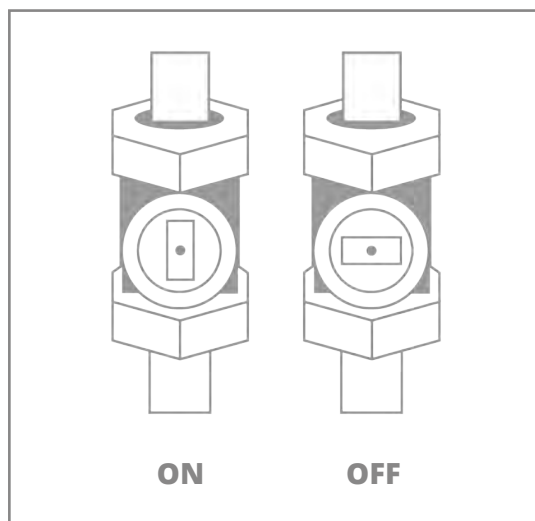
- i. Thread the pilot line, thermocouple, and ignited lead through a hole in the burner pan, and connect them to the control box.
- ii. Gently tug on the wires to make sure the connection is secure, both on the control box and the flared connection.
- iii. Screw the thermocouple onto the brass fitting on the side of the control box. Do not overtighten.
- iv. Mount the pilot onto the burner pan.
- v. Once all connections are secure, preform a gas leak test before operation.

# Gas Connections

Please consult your burner manual for hooking up gas line connections and clearance to combustible materials.

## Before You Begin:

- Check to make sure your gas valve is in the OFF position before starting your gas connections.
- Make sure the correct orifices are installed for the fuel type you are using. **Please see your burner manual for orifice sizing information.**
- Use only joint compound or tape that is resistant to all gases. Apply joint compound to male pipe fittings only — do not use on flared fittings.





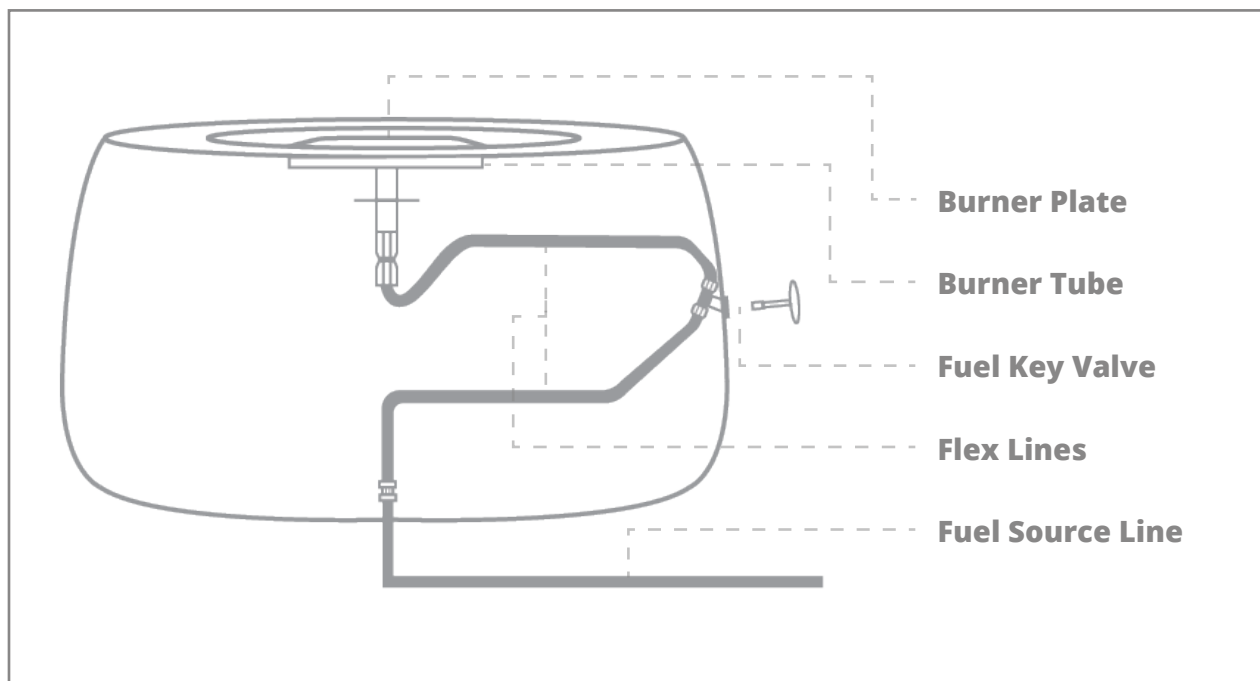
# Gas Connections Continued

## Propane Configurations:

- i. For Propane tank installations, you will need to purchase a gas regulator hose.
- ii. Connect the regulator hose to the Propane tank, then tighten by hand.
- iii. Feed the hose through one of the four holes into the bottom of the fire pit, then connect the hose to the burner.
- iv. **Burners do not require an air mixer valve when connected to a Propane gas supply.**

## Natural Gas Configurations:

- i. Hard-piped installations will require a permanent gas line. **If a gas line is not already installed, you will need to hire a professional to install one and hook up your fire pit.**
- ii. Attach the included flexible gas line from the burner to the gas valve through one of the four holes into the bottom of the fire pit.
- iii. Connect your gas supply to the shutoff valve using the included flexible gas line.
- iv. Use 2 open-ended wrenches to tighten all connection points. After the connections are finger-tight, make an additional quarter-inch turn with your wrenches to lock them into place.

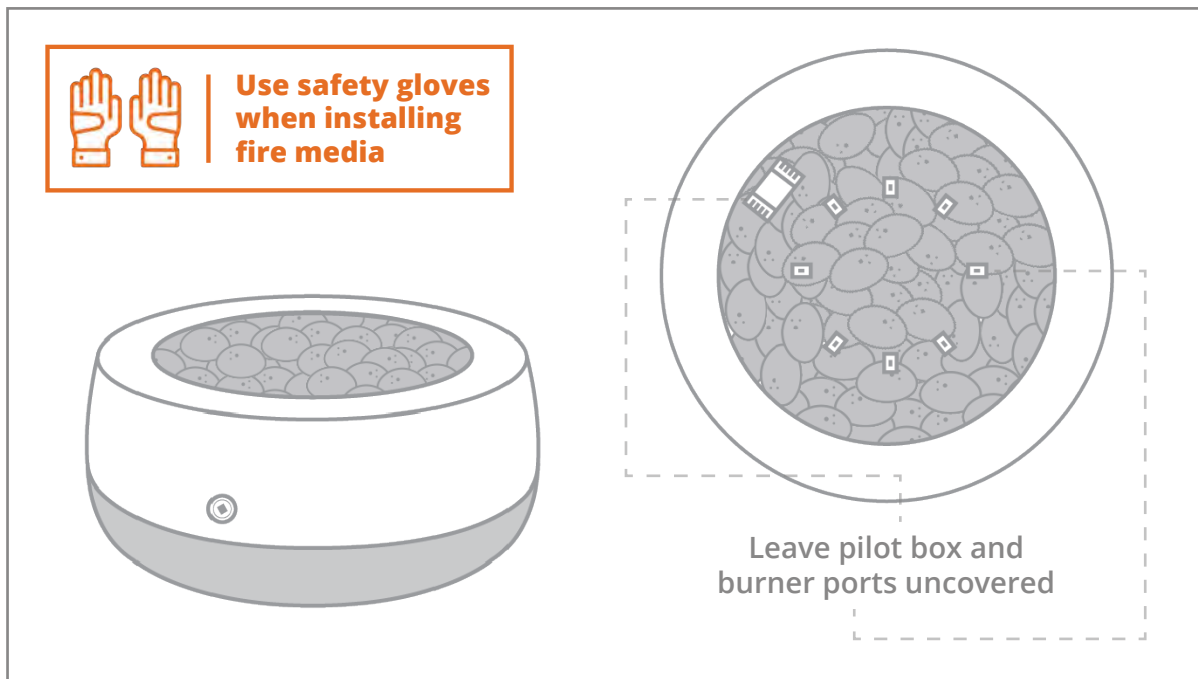


# Fire Media Instructions

**Please refer to your burner manual for a list of approved fire media.**

- Wear a pair of sturdy gloves to install your media to avoid injuries from shards of fire glass or lava rock.
- **Do not dump in fire media.** Scatter all included or approved media on top of the flat burner pan and evenly spread it across the entire burner surface.
- For lava rock installation, apply the media only deep enough to cover the burner ring and pan — less than 2 inches above the fire ring.
- For decorative fire glass, cover the burner with  $\frac{1}{8}$  to  $\frac{1}{4}$ -inch of glass. Do not overfill.
- **Do not operate your fire pit without media.**
- Do not cover burner orifices with burning media.
- For electronic ignition models, do not cover the pilot hood assembly with media.
- The use of concrete logs and  $\frac{3}{4}$ -inch fire glass is not recommended.

## Proper Fire Media Installation:



## Operating Instructions



### IMPORTANT

**Before operating your Tondo Fire Pit, ensure all gas connections are properly tightened and thoroughly checked for leaks.**



### IMPORTANT

**Refer to your burner manual for information on proper leak detection and other critical information.**



### IMPORTANT

**All fire pits with electronic ignition systems must be turned OFF via wall switch when not in operation.**



### IMPORTANT

**Before you begin operating your fire pit, make sure it's clear of debris, the cover is removed, if applicable, and the unit is safe to start.**

## Match-Lit Ignition Configurations

- With the valve on the fire pit in the OFF position, open the valve on your Propane tank or Natural Gas supply
  - Double-check to make sure there are no gas leaks at the regulator or inlet side of the valve.
    - i. If a leak is detected, immediately shut off the gas supply and wait 5 minutes to allow gas to dissipate. Fix any leaks before proceeding.
  - Ignite a match or log lighter and hold the open flame directly over the burner, with the gas valve and key valve still in the OFF position.
  - Slowly turn your gas valve to the ON position. The gas line will fill up and flow to the key valve.
  - Slowly turn the key valve to the ON position to release gas to the burner.
  - Adjust the flame to your desired height.
  - To extinguish the fire pit, turn your gas valve and key valve to the OFF position.
- 

## Electronic Ignition Configurations

- To ignite your fire pit, simply turn ON the electronic device you are using as your power supply.
- Within 10 seconds of power application, the pilot flame should be visible (at night).
- Within 10 seconds of pilot flame ignition, the burner should ignite.

## Warranty Information

**Except as noted herein, this FlameCraft product is warranted to the original purchaser as follows:**

**Concrete:**

1 year (defects in material and workmanship)

**Electronics, Gas Valves, & Pilot Assembly:**

Commercial - 6 months; Residential - 1 year

**Stainless Steel & Aluminum Pans:**

Commercial - 1 year; Residential - 3 years

**Burner Ring & Burner Bars:**

Lifetime Warranty

**Electrodes & Spark Igniters**

Not Warranted (due to lifespan)

---

### Details Related to the Warranty

- This FlameCraft product is warranted to the original purchaser to be free from defects in material and workmanship for the periods provided above and commences from the date of purchase.
- The warranty on parts and in-house labor will apply only to claims presented to us by FlameCraft's original customer and is in lieu of all other warranties expressed or implied.
- FlameCraft will, at its election, repair or replace the product or make appropriate adjustments where FlameCraft's inspection discloses any defects occurring in normal usage within the listed time periods.
- Concrete should be inspected prior to installation and any defects in material and workmanship must be reported immediately. Changes in appearance characteristics will naturally occur over time much like that of a natural stone. Efflorescence (the formation of a residue on the surface area) is common in all cement-bodied materials and is natural. This is an expected and fully harmless feature of concrete.

## Warranty Exclusions

- This warranty excludes claims for incidental or consequential damage and indirect collateral expenses arising from product defects or warranty recovery. Product manufactured by FlameCraft including cLCus, UL, or CSA Certified models, cannot be altered or modified in any way.
- FlameCraft is not responsible for local codes and a product that is not approved for installation is not covered under warranty. Please check with your local authorities or governing agencies for proper approvals before purchasing and installing.
- FlameCraft is not responsible for damage caused by overheating, modification, abuse, improper storage, installation, or maintenance.
- FlameCraft is not responsible for surface level rust on stainless steel products.
- FlameCraft is not responsible for the actions of the installer, including negligence and any modifications to the product.
- Any labor involving installation or maintenance with the unit is not covered.
- No warranties are made against crazing, scratching, or wear, including improper alteration of the surface with sealers or grout, falling objects, abuse, misuse, exposure to extreme temperatures, using improper chemicals or compounds to clean, or other similar incidents.
- No claims for concrete will be accepted past the initial one-year warranty period.
- Damage to product caused by installation, accident, misuse, abuse, or improper maintenance is not covered by this warranty. With respect to the product, variations in color, shade, tonality, crazing, shrink, and texture are inherent characteristics thereof and are not defects. Variations in facial dimensions and thickness will be allowed as per industry standards.
- FlameCraft is not liable for any direct or indirect costs associated with the repair or replacement of the product, including removal, installation, or reinstallation of the product.

**To obtain service of the warranty, please contact us at (800) 919-1904 for details on the warranty process for your FlameCraft product.**

## Routine Cleaning & Maintenance

- i. Mild cleansers are the best way to clean your product. Generally, warm soapy water applied with a clean sponge or microfiber cloth is all that is necessary to keep your Tondo's exterior in tip-top shape.
- ii. Avoid harsh chemicals, such as lacquer-based thinners, acetone, denatured alcohol, ammonia, or bleach, as well as abrasive cleaners and scrubbing pads.
- iii. Use only pH-neutral, non-abrasive cleansers to avoid damage to the factory-applied sealer.
- iv. Make sure to clean up spills and splashes as quickly as possible and do routine cleaning as needed. Acidic products like vinegar and lemon juice, may stain and remain in place if not immediately removed.
- v. If the concrete comes sealed by the manufacturer, we recommend any resealing be done with the same or equivalent sealer. Please see the manufacturer of the sealer for specific care and maintenance.

---

## Repair

Concrete might stain or scratch over time. These imperfections do not diminish or affect the quality of the product. However, if you believe your concrete needs repair, please reach out to us for one of our DIY concrete repair kits, or seek the advice of a professional stone resurfacing contractor or professional precast company.



### IMPORTANT

**It's very important to care for your Tondo Fire Pit properly, and as directed, to ensure the natural beauty of the concrete remains over time.**





**Enjoy**

# FLAMECRAFT

