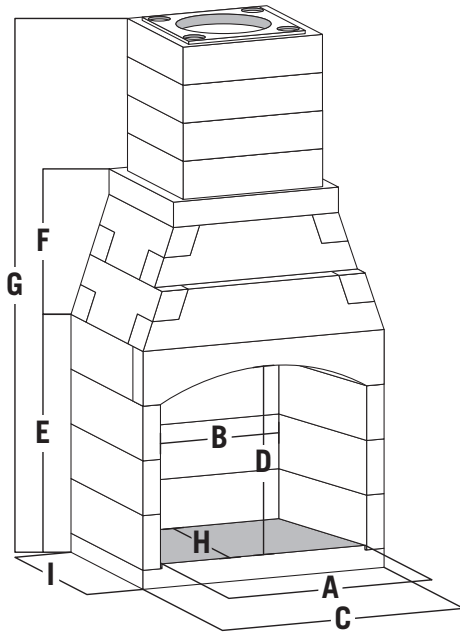


30" ARCHED OUTDOOR CONVENTIONAL

UL 127 & ULC S610 COMPLIANT

PRODUCT DIMENSIONS



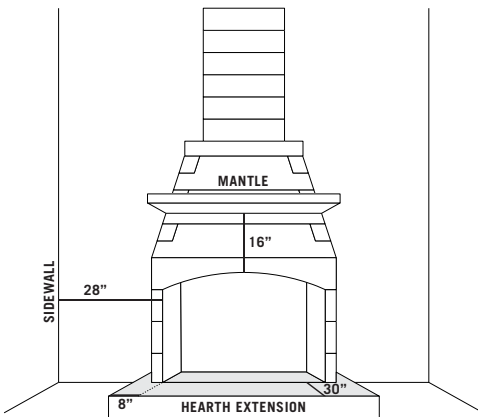
WIDTH	A	OPENING	32.5"
	B	FIREBOX REAR	22"
	C	OVERALL	38"
HEIGHT	D	OPENING	29.75"
	E	FIREBOX	37.5"
	F	SMOKE CHAMBER	22.375"
DEPTH	H	FIREBOX	22.5"
	I	OVERALL	28.5"
DAMPER		SIZE	N/A
VENEER	55 FT ²		
WEIGHT	UNIT: 1,650 LBS		
	INSTALL KIT: 850 LBS		

All measurements listed are based on dry stack units before firebrick is installed.

Dimensions are nominal and are given for design and framing reference only.

Please consult the manufacturer's installation manual for all details and requirements before making a final design layout decisions.

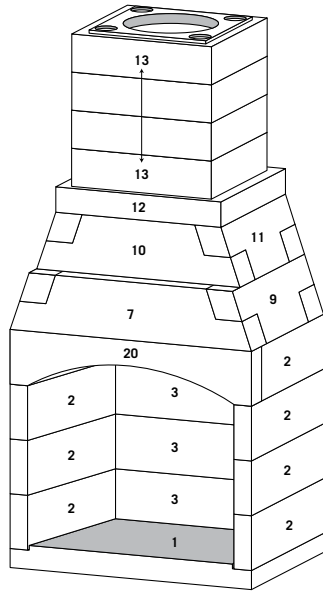
CLEARANCE TO COMBUSTIBLES



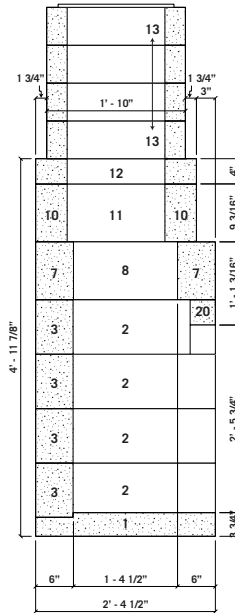
- **OPENING TO SIDEWALL:** 28"
- **OPENING TO MANTLE WITH 8" DEPTH:** 16"
- **NONCOMBUSTIBLE HEARTH EXTENSION:** 30" front; 8" each side
- **FIREBOX & SMOKE CHAMBER TO COMBUSTIBLES OR FRAMING:** 1"
- **SMOKE CHAMBER (FRONT WALL & TOP) TO WOOD FRAMING:** 1"

AVAILABLE ACCESSORIES

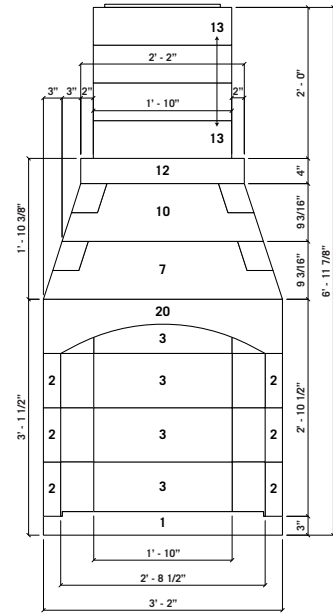
- FireRock Adhesive Mortar (**MANDATORY**)
- Solid Block Chimney (if desired height more than 24")
- Firebrick
- Crown Cap
- Installation Kit
- Log Lighter
- UL 103 Metal Chimney (12 or 14")



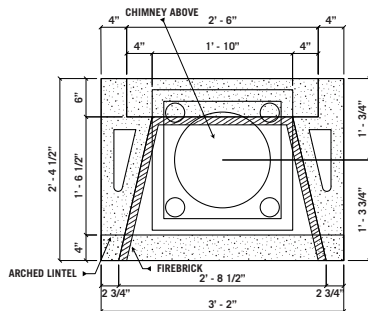
ISOMETRIC



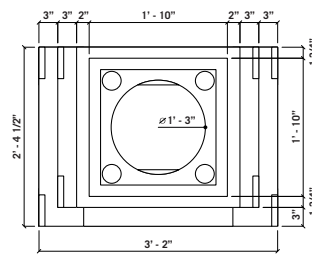
SECTION A-A



FRONT ELEVATION



FIREBOX PLAN



CHIMNEY PLAN

#	COMPONENT NAME
1	BASE PLATE
2	FIREBOX SIDE
3	STRAIGHT BACK BLOCK
7	SQUARE THROAT BACK
8	THROAT SIDE
10	SMOKE CHAMBER FRONT AND BACK
11	UNIVERSAL SMOKE CHAMBER SIDES

#	COMPONENT NAME
12	CHIMNEY BASE
13	CHIMNEY BLOCK
20	ARCHED LINTEL

*NOTE: All pieces subject to a 1/8" tolerance