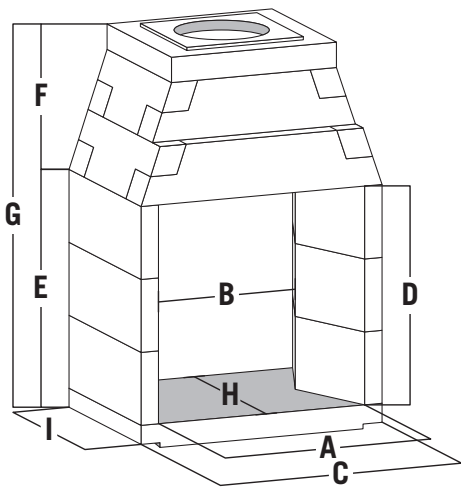


# 30" SEE-THROUGH

UL 127 & ANSI Z21.60 COMPLIANT

## PRODUCT DIMENSIONS

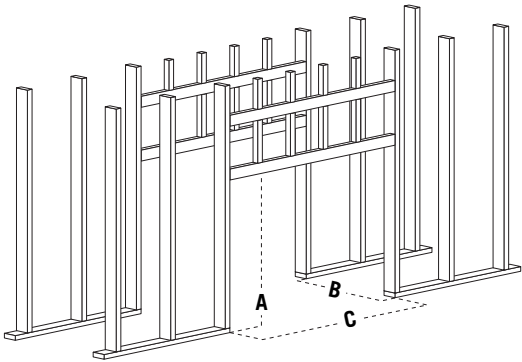


WIDTH	A	OPENING	32.5"
	B	FIREBOX REAR	22"
	C	OVERALL	38"
HEIGHT	D	OPENING	34.5"
	E	FIREBOX	38.25"
	F	SMOKE CHAMBER	22.375"
DEPTH	G	OVERALL	60.625"
	H	FIREBOX	28.5"
	I	OVERALL	28.5"
DAMPER		SIZE	TOP SEAL
WEIGHT	UNIT: 1,575 LBS		
	INSTALL KIT: 850 LBS		

All measurements listed are based on dry stack units before firebrick is installed.  
Dimensions are nominal and are given for design and framing reference only.  
Please consult the manufacturer's installation manual for all details and requirements before making a final design layout decisions.

## RECOMMENDED FRAMING DIMENSIONS

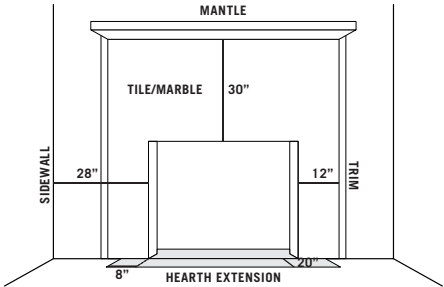
Dimensions add 0.5" of air space to the required clearances



A*	B	C
48.4375"	N/A	41"

\* It is recommended to not install framing header until after firebox is installed.

## CLEARANCE TO COMBUSTIBLES



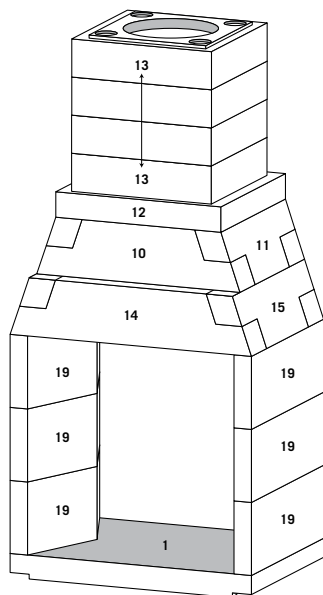
- OPENING TO SIDEWALL: 28"
- OPENING TO COMBUSTIBLE TRIM: 12"
- OPENING TO MANTLE WITH 8" DEPTH: 30"
- NONCOMBUSTIBLE HEARTH EXTENSION: 20" front; 8" each side
- FIREBOX & SMOKE CHAMBER TO COMBUSTIBLES OR FRAMING: 1"
- SMOKE CHAMBER (FRONT WALL & TOP) TO WOOD FRAMING: 1"

## AVAILABLE ACCESSORIES

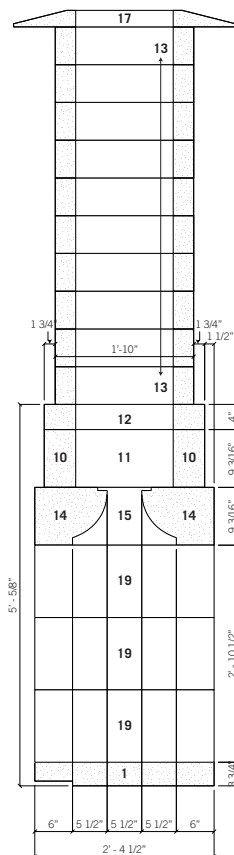
- FireRock Adhesive Mortar (MANDATORY)
- Solid Block Chimney
- Offset Block
- Brick Flange
- Firebrick
- Crown Cap
- Outside Air Kit
- Installation Kit
- Top Seal Damper
- Log Lighter
- LiteRock Riser
- UL 103 Metal Chimney (12" or 14")
- Adaptor Block (12" only)



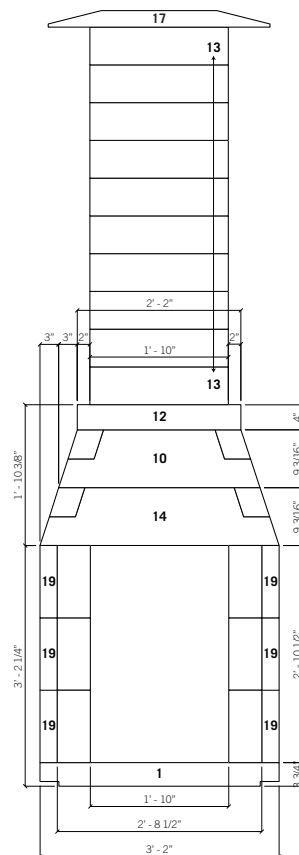
**FRO330 - FIREROCK 30" SEE-THROUGH**  
APPROVED FOR INDOOR & OUTDOOR USE



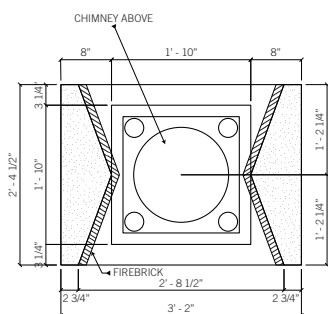
ISOMETRIC



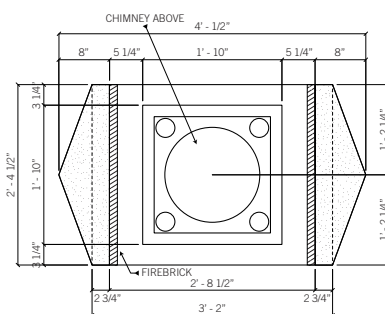
SECTION A-A



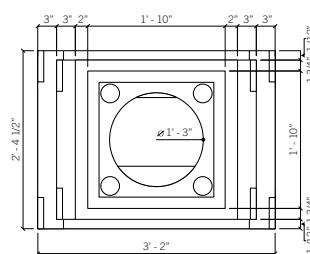
FRONT ELEVATION



FIREBOX PLAN



FIREBOX PLAN - ALT



CHIMNEY PLAN

#	COMPONENT NAME
1	BASE PLATE
10	SMOKE CHAMBER FRONT AND BACK
11	UNIVERSAL SMOKE CHAMBER SIDES
12	CHIMNEY BASE
13	CHIMNEY BLOCK
14	RADIUS THROAT
15	SEE-THROUGH THROAT SIDE

#	COMPONENT NAME
17	LARGE CROWN CAP
19	SEE-THROUGH FIREBOX SIDE

\*NOTE: All pieces subject to a 1/8" tolerance



**FRO330 - FIREROCK 30" SEE-THROUGH**  
APPROVED FOR INDOOR & OUTDOOR USE